



# ATLAS C4EYE

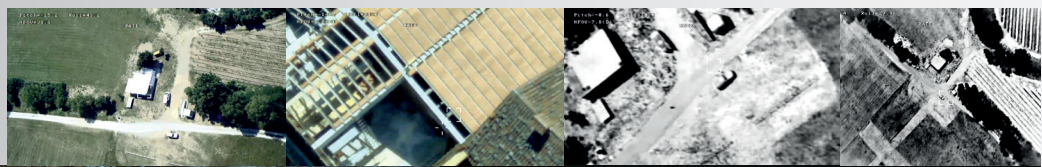
## Advanced Technology Light Acquisition System

- up to 59 min
- EO/IR HD
- 15km
- 10km<sup>2</sup>
- hand
- para



The ATLAS C4EYE is the most advanced surveillance system on the market in the 2-3kg category. Developed by C-ASTRAL X-WORKS after a decade of field experience in small UAS exploitation, this hand launched, easy to operate, water resistant system can carry an EYE-X HD stabilized multisensor gimbal while observing the target stealthy and silently. ATLAS carries a new avionics and guidance solution that is completely compatible with the current BRAMOR family ground segments.

WINGSPAN	155 cm
LENGTH	82 cm
WEIGHT (MTOW)	2.4 kg
PAYLOAD	0.3 kg
SENSOR	EYE-X HD - EO/IR Zoom: x6.6 + x2 digital (total x13.2) Thermal Resolution : 640x480
PROPULSION	C-Astral Brushless Electric
CRUISE SPEED	15 m/s
MAX SPEED	30 m/s
TAKE-OFF	Hand Launched
LANDING	Parachute
SERVICE CEILING	Up to 5000m ASL
DATALINK RANGE	15 km, IP Link / Encryption AES 128bit
ENDURANCE	Up to 59 minutes (software limited)
FLIGHT READY IN	2 minutes
OPERATOR REQUIREMENTS	One operator
TRANSPORTATION	Milspec Case / Backpack





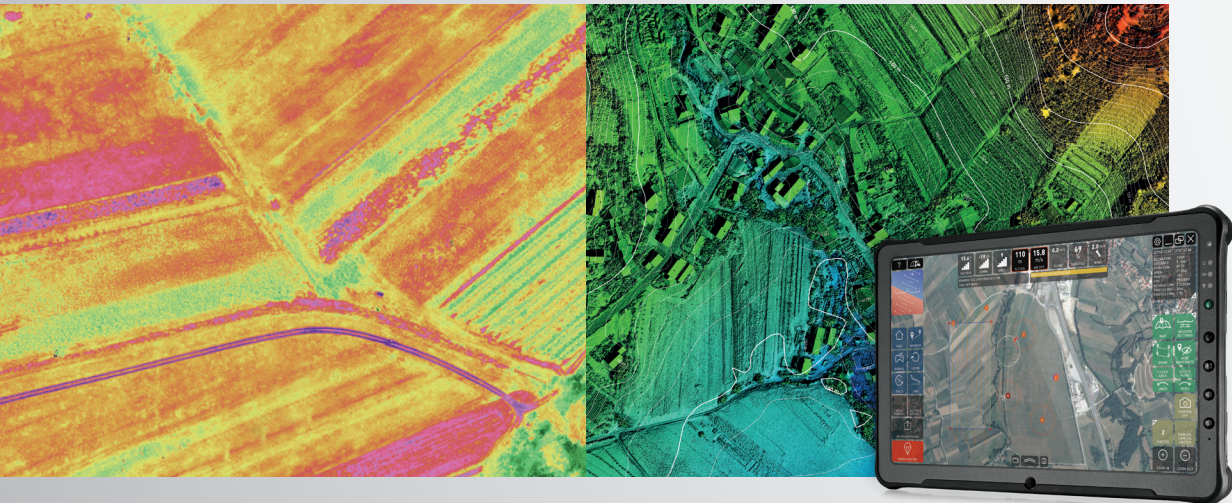
# ATLAS ppX

## Advanced Technology Light Acquisition System

- up to 59 min
- options
- 15km
- 10km<sup>2</sup>
- hand
- para



The ATLAS ppX is currently the most compact member of the C-ASTRAL UAS family weighing only 2.3 kg. Developed through a decade of exploitation experience by C-ASTRAL X-WORKS, this hand launched system has a tactical heritage and can carry multiple modular sensors for precise PPK supported photogrammetry, multispectral and thermal remote sensing. ATLAS ppX excels with a modular architecture that enables quick reconfigurations and multiple functionalities in a light, compact easily transportable package.



WINGSPAN	155 cm
LENGTH	82 cm
WEIGHT (MTOW)	2.3 kg
PAYLOAD	0.3 kg
SENSOR	Single RGB 21MP RGB 20MP (Global shutter) Multispectral MS-RE Multispectral MS-SQ
PROPULSION	C-Astral Brushless Electric
CRUISE SPEED	15 m/s
TAKE-OFF	Hand Launched
LANDING	Parachute
SERVICE CEILING	Up to 5000m ASL
DATALINK RANGE	15 km, IP Link / Encryption AES 128bit
ENDURANCE	Up to 59 minutes (software limited)
FLIGHT READY IN	2 minutes
OPERATOR REQUIREMENTS	One operator
TRANSPORTATION	Milspec Case / Backpack